

On-street CCTV provision Leicester City

Neighbourhood Services and Community Involvement
Scrutiny Commission

March 2019

Why review?

- Outdated infrastructure; ageing technology
- Organic growth
- Separate systems (Tango Bravo, Tango Victor)
- Repair costs high
- Parochial approach to demand and use

Aims and objectives

- To define the purpose of CCTV
- Section 17 Crime and Disorder Act 1988

'... a general duty on each local authority to take account of the community safety dimension in all of its work. All policies, strategies, plans and budgets will need to be considered from the standpoint of their potential contribution to the reduction of crime and disorder'.

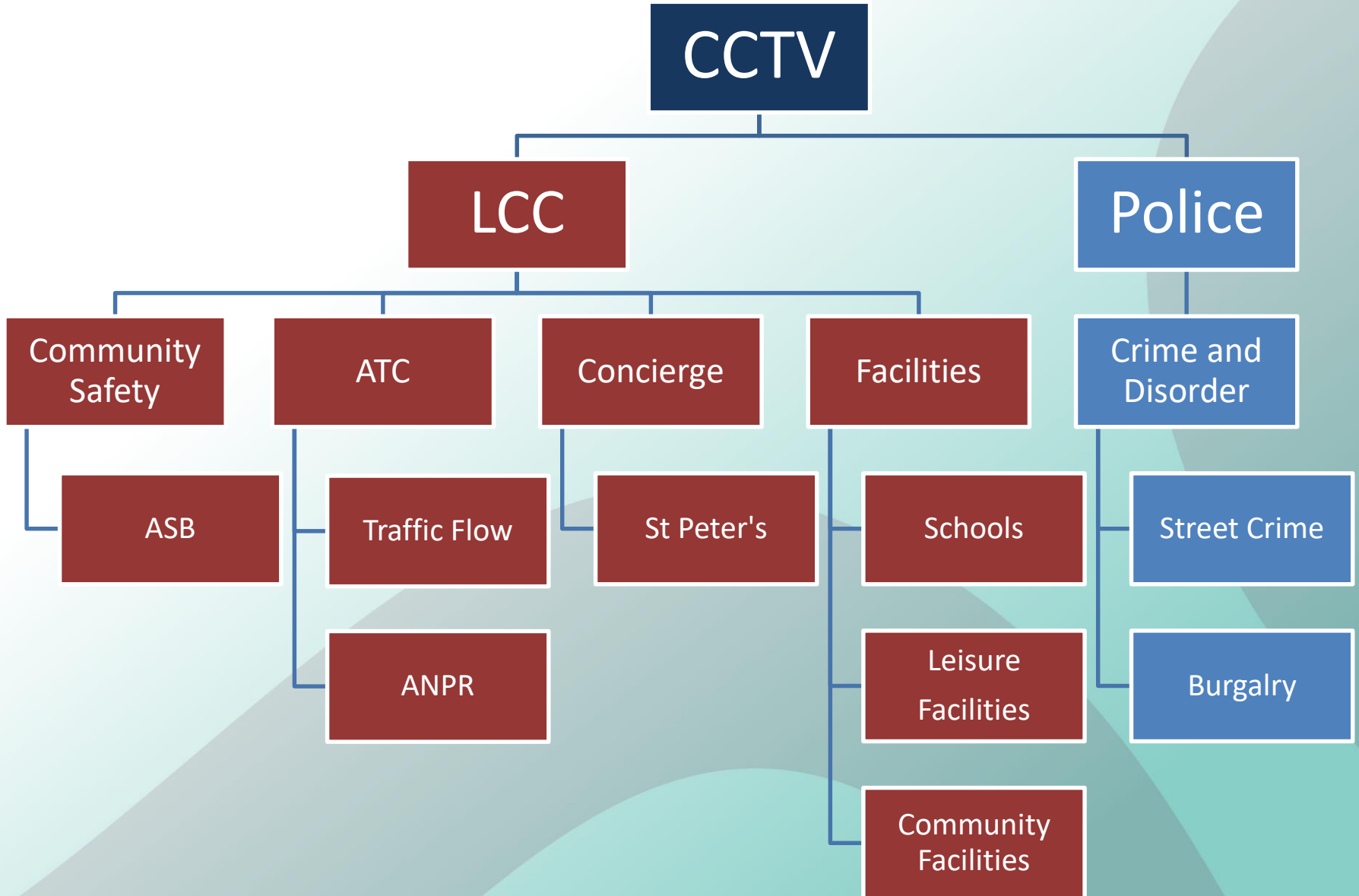
(Home Office Guidance)

- To provide a resilient and future proofed service
- To provide a service that is fit for purpose
- To provide a service that is cost effective
- Develop a programme of improvement

Governance arrangements



Linkages / partnerships

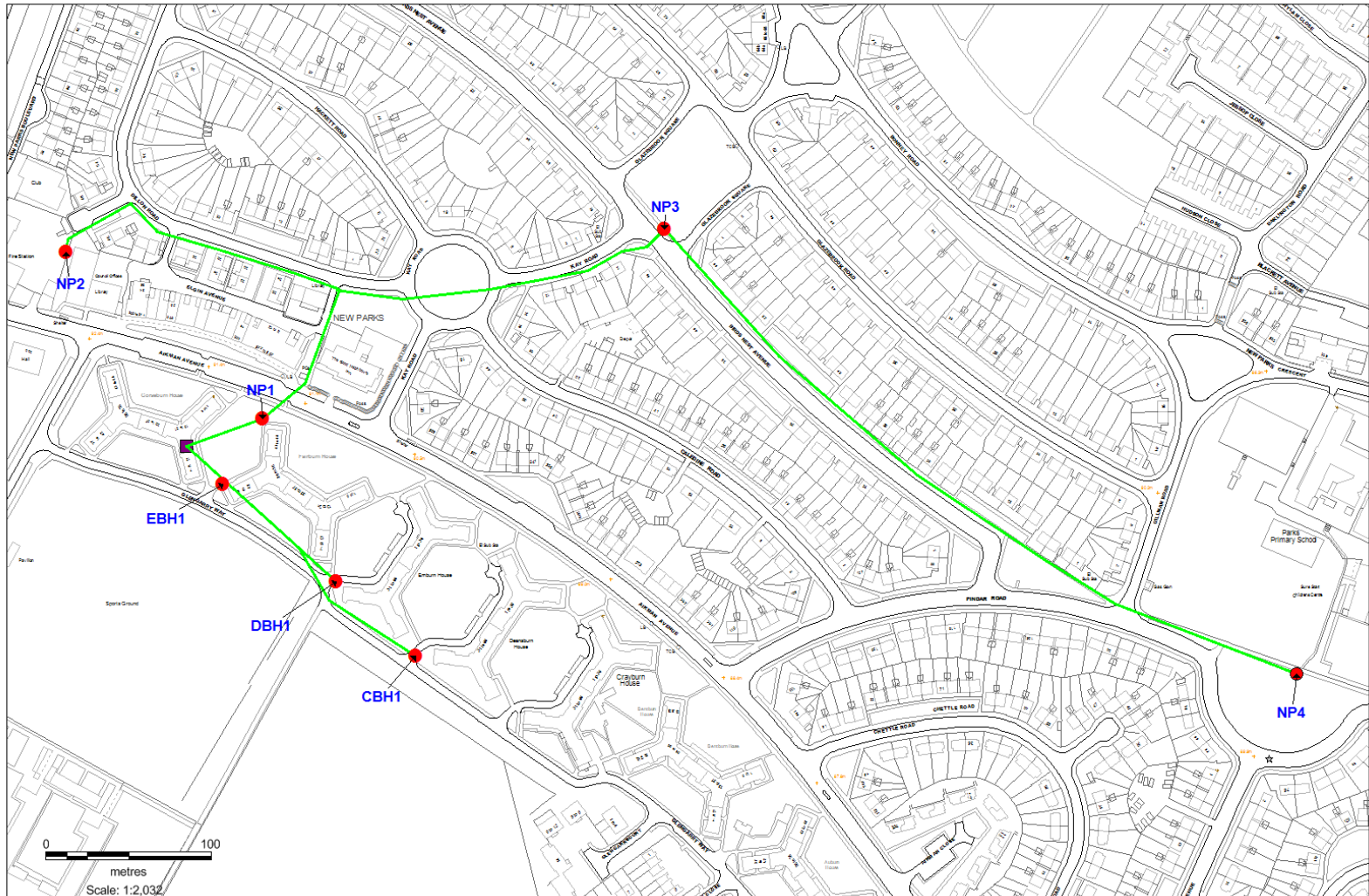


Understanding the service

- Identify location, number and rationale
- Review requirement
- Review capability of system
- Review capacity of system
- Review deployables / pod cameras

- Move to open protocols
- Use of analytics / intelligent software

Understanding the infrastructure

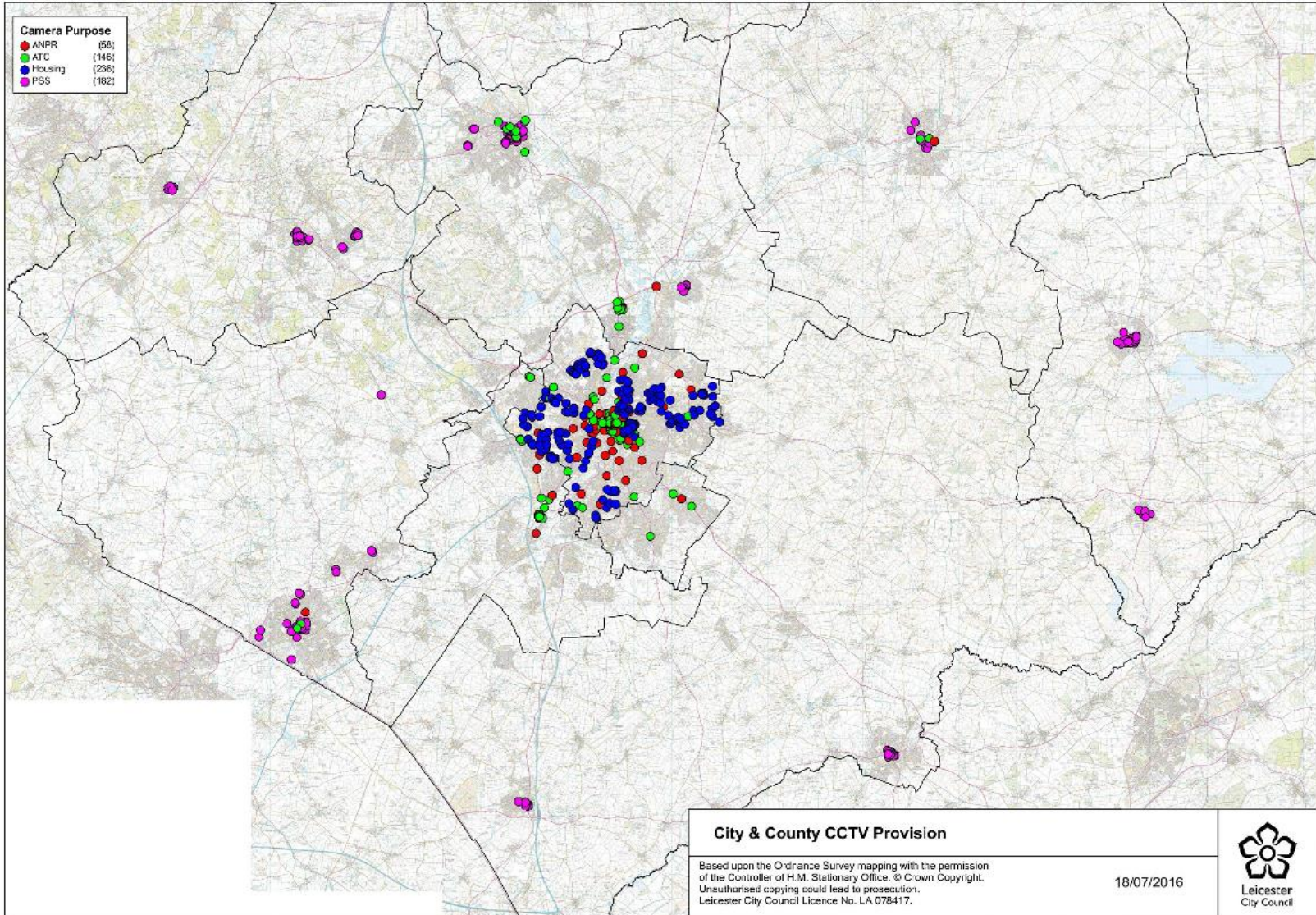


Based upon the Ordnance Survey mapping with the permission of the Controller of H.M. Stationary Office. © Crown Copyright. Unauthorised copying could lead to prosecution. Leicester City Council Licence No. LA 078417.

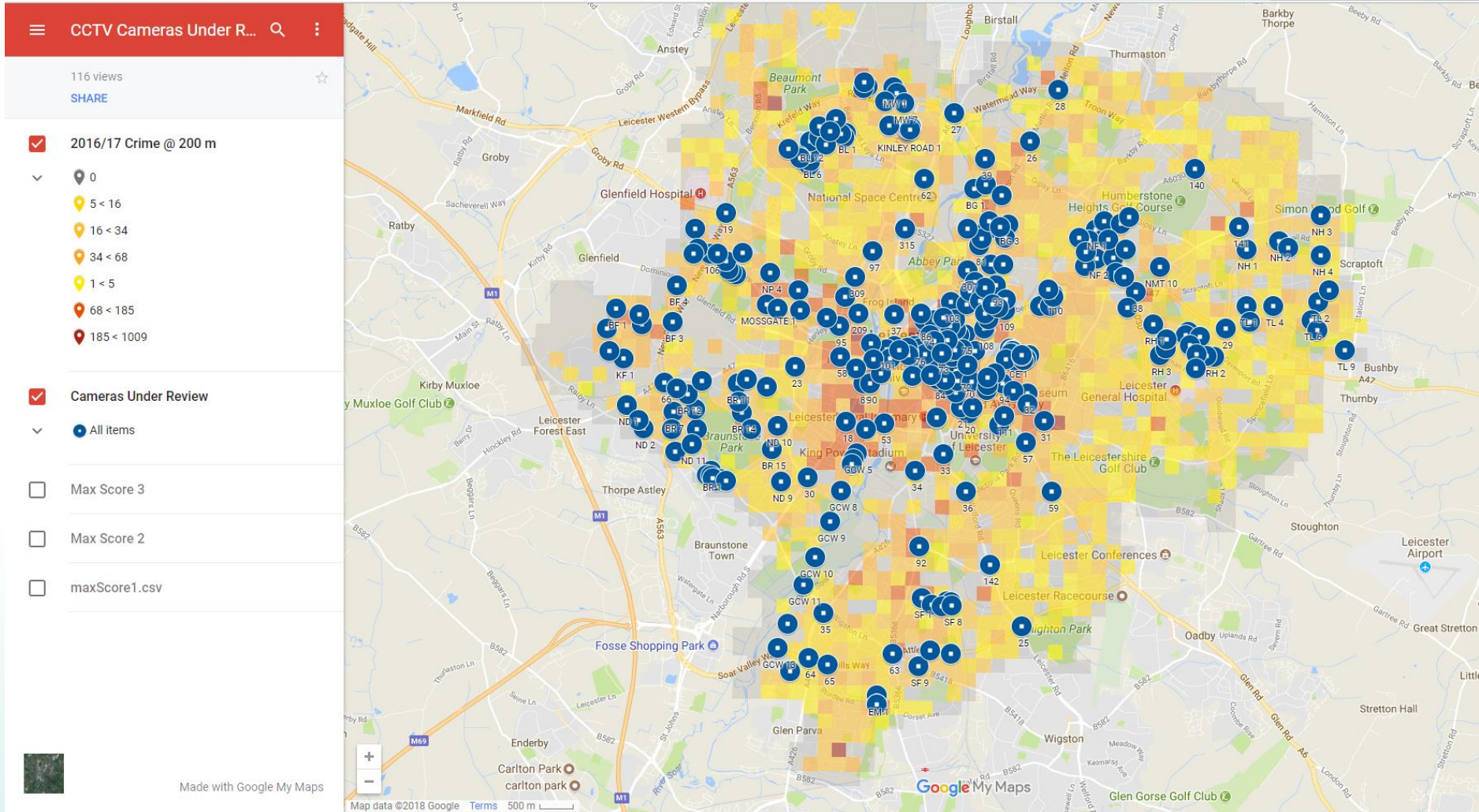
New Parks & New Found Pool

KEY: Node ■ Cable Run — Camera ●

Understanding the infrastructure



Determining the need



Reviewing cameras



Upgraded operations room

- £280k capital investment
- Move from analogue to digital
- More resilience
- One operations room providing 24/7 cover



Camera and infrastructure upgrades

- £800k capital investment
- Maximise use of the Council's 'dark fibre'
- Resilience for node points
- Improved data flow
- Future proof cameras



CP-6302-31-I

FLIR QUASAR™
1080p FHD IR PTZ camera

INFRARED ILLUMINATION, 6WDR, GYRO BASED IMAGE STABILIZATION, SERVO FEEDBACK DRIVEN PRECISION PRESETS.

The Quasar 1080p IR PTZ camera continues to deliver. With its best in class broadcast video quality and guaranteed frame rates up to 60 FPS, combined with IR Illumination, EIS (Electronic Image Stabilization), Servo Feedback and Shutter Wide Dynamic Range, the newest member of the Quasar family is designed to tackle the most challenging video capture environments. The FLIR Quasar CP-6302-31-I FHD IR PTZ utilizes the latest technology to deliver one of the lowest bandwidths in the industry through its advanced H.264H.265 motion processing technology. The perfect choice for airports, city surveillance projects, critical infrastructure, business or education campuses or any application requiring Pan/Tilt/Zoom capabilities.

Features

- Long Range IR Illumination up to 200 Meters
- 30x Optical Zoom FHD Continuous Auto-Focus Lens
- FHD 1080p @60 fps at the Lowest Bit Rate
- Multi-Stream Adaptive Streaming
- sWDR
- Gyro-Based EIS
- Servo Feedback for Better Preset Precision
- Included Analytics:
 - Tamper Detection
 - Multi-zone VMD
- Privacy Masking
- Bi-directional audio
- PoE+, 24 VAC, and 12VDC Power Options
- Web interface for viewing control
- Storage on the Edge

www.flir.com

FLIR | The World's Sixth Sense™

Camera and infrastructure upgrades

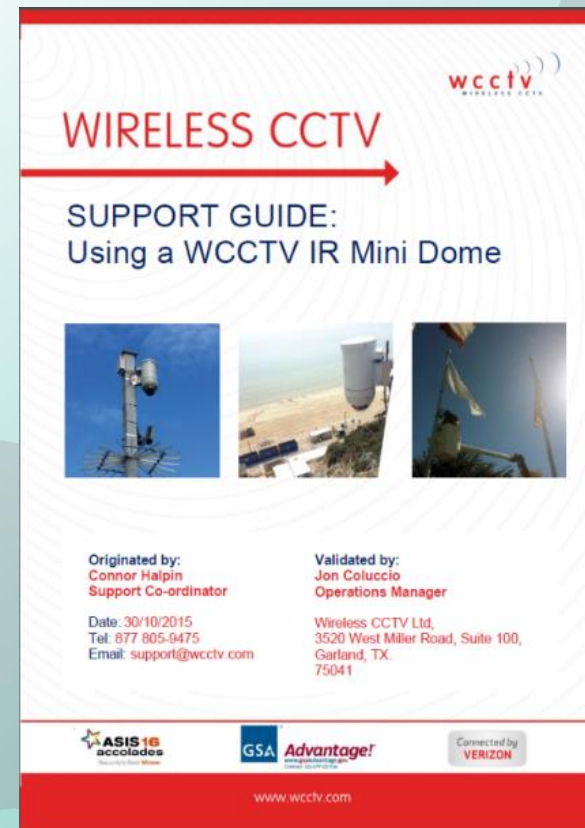


Camera and infrastructure upgrades



Camera and infrastructure upgrades

- £90k investment
- Greater flexibility




The image shows the cover of a support guide titled "WIRELESS CCTV SUPPORT GUIDE: Using a WCCTV IR Mini Dome". The cover features the WCCTV logo in the top right corner, which includes the text "wccctv" and "WIRELESS CCTV" with three curved lines above it. Below the title, there are three small photographs: the first shows a camera mounted on a tall metal pole against a blue sky; the second shows a camera mounted on a structure in an outdoor, possibly industrial or military, setting; the third shows a camera mounted on a structure with a flag in the background. At the bottom of the cover, there is contact information for the originator and validator, along with the date and email address. Logos for ASIS 16, GSA Advantage!, and Verizon are also present at the bottom, along with the website address www.wccctv.com.

wccctv
WIRELESS CCTV

WIRELESS CCTV

SUPPORT GUIDE:
Using a WCCTV IR Mini Dome



Originated by:
Connor Halpin
Support Co-ordinator

Validated by:
Jon Coluccio
Operations Manager

Date: 30/10/2015
Tel: 877 805-9475
Email: support@wccctv.com

Wireless CCTV Ltd,
3520 West Miller Road, Suite 100,
Garland, TX,
75041

ASIS 16
accolades

GSA Advantage!

Connected by
VERIZON

www.wccctv.com

Camera and infrastructure upgrades



Any Questions?